



For MAC & Windows OS

Wormhole Switch

JUC400

User Manual

Required Environments

Windows

- OS: Windows 7 / Vista / XP / 2000
- Available USB port (USB 2.0 is recommended)
- CPU: Intel Pentium II processor
- RAM: 512MB RAM or higher
- Hard disk: Space requirement of at least 100MB

Mac

- Mac OS X 10.5 Above
- Available USB port (USB 2.0 is recommended)
- CPU: Power PC G4 processor or later
- RAM: 512MB RAM or higher
- Hard disk: Space requirement of at least 100MB

iPad:

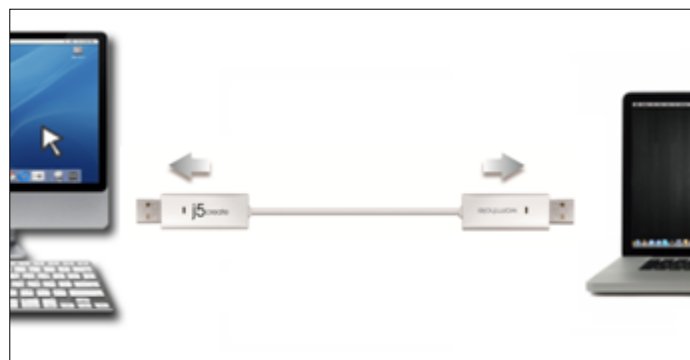
- USB Connection Kit

Function List

Function Behavior for Operation System	Windows to Windows Mac to MAC Windows to MAC	Windows to iPad MAC to iPad
Keyboard & Mouse Control Switching		
Use mouse middle button	Yes	X
Use the mouse to move off the edge of the screen	Yes	X
Hotkey Toggle [Alt+S]	Yes	Yes
Keyboard Control Sharing	Yes	Yes
Clipboard Sharing		
Auto share	Yes	X
Data Transfer		
Drag and Drop	Yes	X

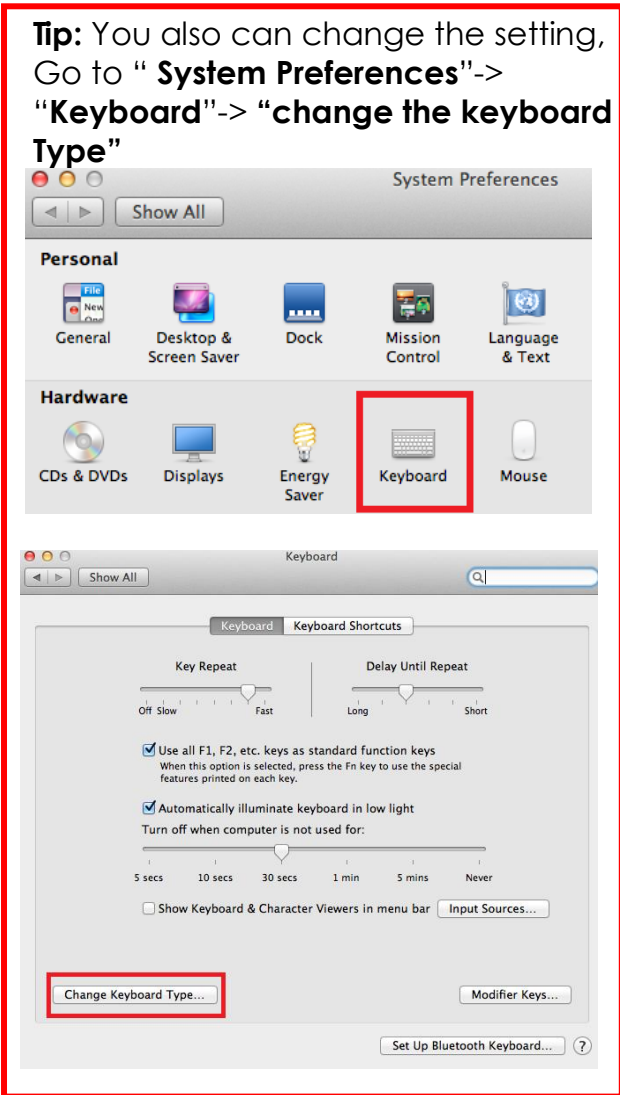
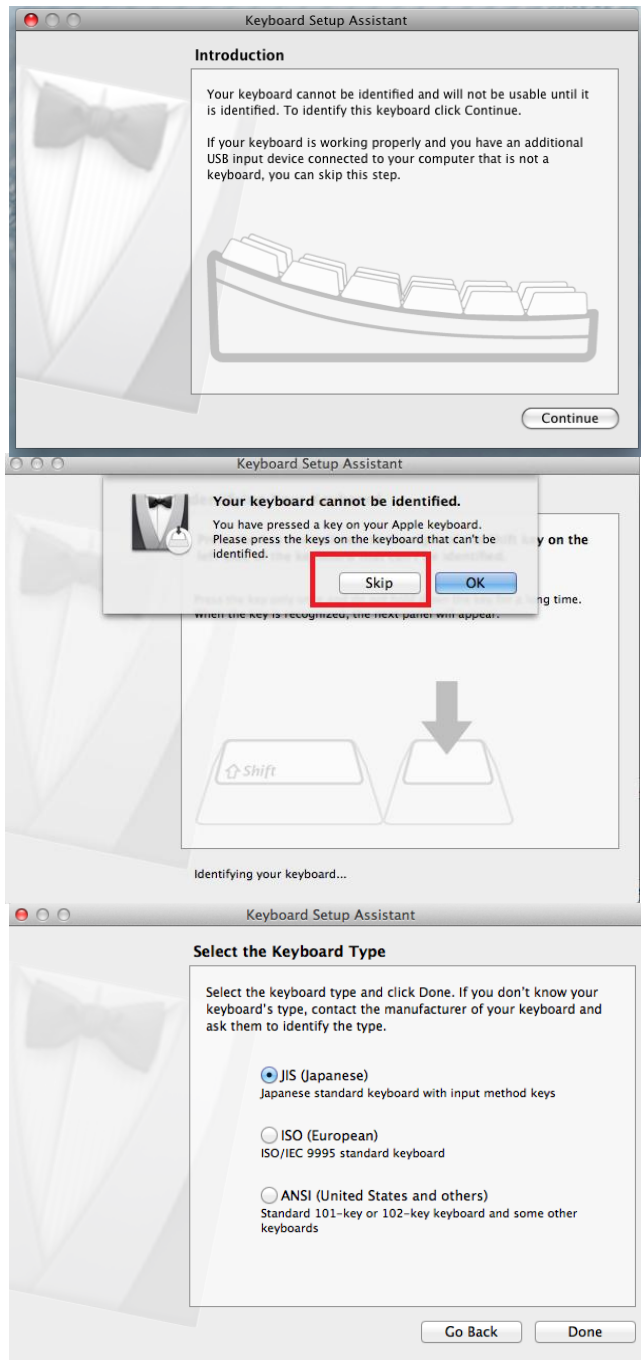
GETTING STARTED-MAC

1. Connect one end of the **Wormhole Switch** to a standard USB port on one of the two computers. And connect the other end of the **Wormhole Switch** to a USB port on the second computer.




2. When you initially connect the **Wormhole Switch** to the MAC computer a window will pop up that says, “**Keyboard Setup Assistant**”, follow the steps to select the keyboard Type.

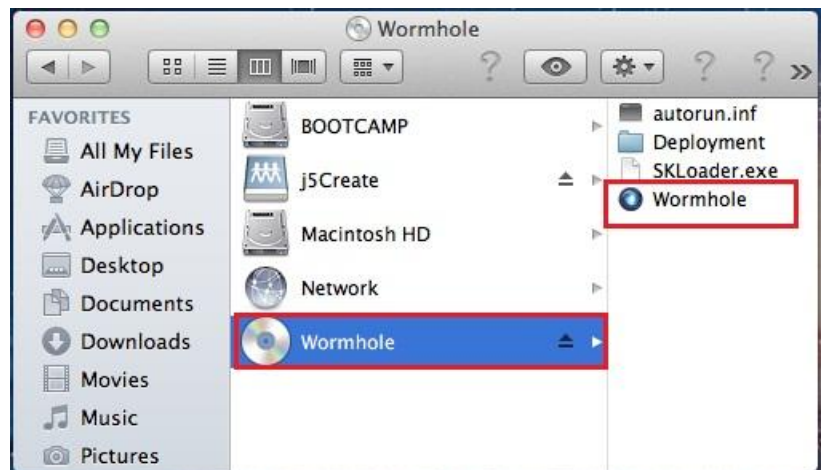
Tip: You also can change the setting, Go to “**System Preferences**”-> “**Keyboard**”-> “**change the keyboard Type**”



3. After the **Wormhole Switch** is plugged in

the “**Wormhole**” CDROM icon  will appear either on the desktop or on the “**Macintosh HD**”.

Double click on the “**Wormhole**”  icon.

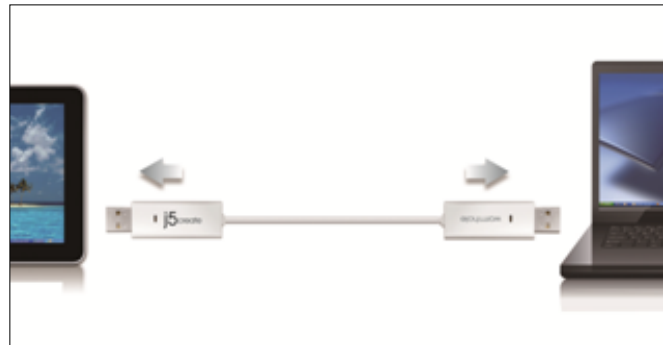


4. When the **Wormhole Switch** is connected properly the wormhole launch page will be shown.



GETTING STARTED-Windows

1. Connect one end of the **Wormhole Switch** to a standard USB port on one of the two **computers**. **And** connect the other end of the **Wormhole Switch** to a USB port on the second computer.



2. The device will automatically start the **Wormhole Switch** software installation on both computers.

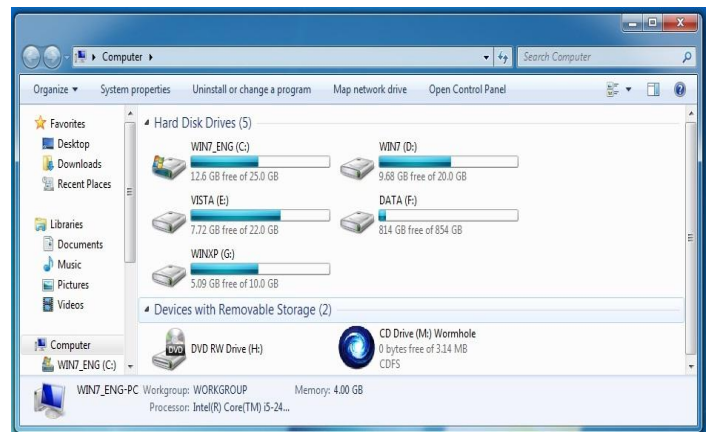
3. An **“AutoPlay”** option window may appear. Please click on the option **“Run WKMLoader.exe”**



Troubleshooting:

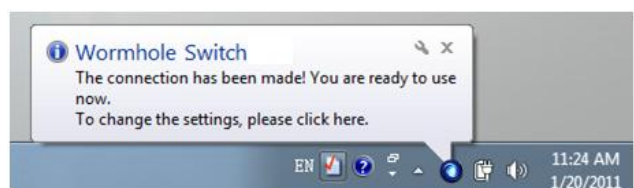
If auto-run is not launched, please follow the steps:
A. Insure both computers are properly connected to the USB cable.

B. Go to **My Computer** and double-click the **j5 Wormhole Switch** icon () to start the application.



4. If the **“User Account Control”** window appears on the screen, Click **“Yes”** to continue.

5. When the **Wormhole Switch** is connected properly the wormhole launch page will be shown.



EXPLORE THE OUTSTANDING FEATURES

Let's explore some outstanding features! You can start playing with your Wormhole Switch and enjoying the convenience it brings you.

Keyboard and Mouse Sharing




- **Use Mouse to Move Off the Edge of Screen:**
Set “**Use mouse move off the edge of screen**” with “**left side of this pc**” in **Preferences**, simply move the mouse off the edge of the screen
- **Use Mouse Middle Button:**
Click the middle button of the mouse to switch the keyboard and mouse from one computer to another.
- **Hotkey**
You can setup the hotkey to activate the control switching.
The default hotkey is (Alt+S)
- Switch the Keyboard usage to another computer



Move the mouse cursor to the second computer and open any editing application such as Word, Excel, Power Point, etc. and use the keyboard of the first computer to type the text on the file of the second computer.

Note:

1. Please use a Mouse and Keyboard set. The Keyboard Switch function always follows the mouse cursor of the same computer. When using a USB Mouse or Keyboard that is not a set, it will default to its limited screen switching function mode only.


2. When the keyboard & mouse is under controlled by other computer, you will see the icon () on the bottom right hand side of the taskbar

Clipboard Sharing

With the **clipboard sharing** feature you can easily edit, copy or paste clipboard content bi-directionally between two computers.



1. Open a file and select the content (text/ pictures) you want from the first computer, right click and select "**Copy**".
2. Move the cursor to the location of the 2nd computer to place the Content (text/ pictures), and right click and select "**Paste**"

* When receiving clipboard data from another computer, the () icon appears at the bottom right hand side of the screen.

File Transferring

o **Drag & Drop**

It is an easy and fast way to transfer files between two computers. Just "drag and drop" the file or folder to the other computer.



You can also do the following to transfer files between the two computers.

o **Copy & Paste:**

1. Right-click on the files that you want to copy and select **Copy**
2. Move the cursor to the other computer
3. Move the cursor to the location that you would like to place the file and Right click, then select **Paste**

o **Hotkeys (Shortcut on Keyboard) :**

1. Click on the files that you would like to copy, and press the (**Ctrl+C**) Keys from Windows OS computer
2. Move the cursor to the other computer
3. Move the cursor to the location that you would like to place the files, and

press the (**Ctrl+V**) Keys to paste the copied files to another computer.

Note: Please use the original system hotkey settings on your computer operating system (the keyboard always follows the mouse cursor).

For example, when you would like to copy content from a Mac OS Computer and paste content to Windows OS Computer follow the steps below:

1. If you are using **a Keyboard for MAC OS**, you need to press the "**Command+ C**" keys and switch the mouse cursor to the Windows OS computer and press the "**Control + V**" keys to paste the content onto Windows OS.
2. Or from a Windows OS to a MAC OS: If you are using **a Keyboard for Windows OS**, you need to press the "**CTRL+C**" keys and switch the mouse cursor to Windows OS computer and press "**Command+V**" keys to paste the content onto a MAC OS.

Keyboard sharing for iPad

This Wormhole Switch also provides a Keyboard sharing for iPad. You can connect a PC and an iPad via the Wormhole Switch and switch the PC's keyboard to work on the iPad. Due to the lack of a USB port on the iPad, you will need a "**USB connection kit**" to connect the Wormhole Switch and other Computer.



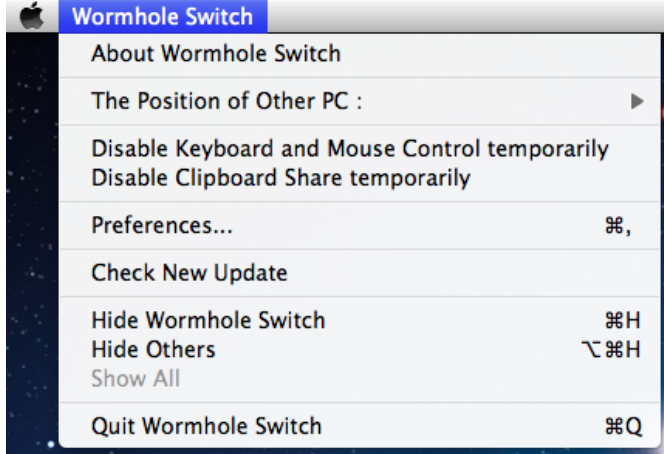
Please follow the steps below:

1. Connect USB connection kit to iPad connector
2. Connect Wormhole Switch to a computer and an iPad
3. Press "**Alt+S**" on computer to switch the usage of Keyboard to iPad
4. You can touch the screen on the iPad to the location you want to start.
5. Now, you are ready to type on the iPad.

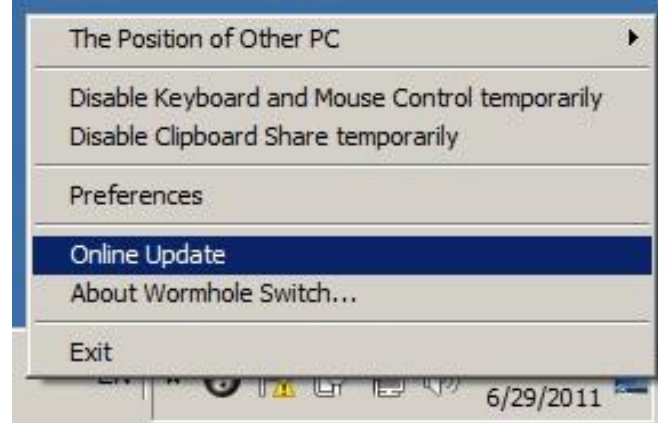
SOFTWARE INSTRUCTIONS

To begin set up, please click **Wormhole Switch Utility Icon Function** (), found in both Mac OS & Windows System

MAC OS:



Windows OS:



- **About the Wormhole Switch:**



Information about the j5 create **Wormhole Switch** can be found here.

- **The Position of Other PC:**

You can quickly set up the position of the other computer by using one of the 4 options (Right/Left/Up/Down)

- **Disable (Enable) the Keyboard and Mouse Control Temporarily & Disable (Enable) Clipboard Share Temporarily:**

You can quickly Disable or Enable sharing option.

If Disabling one of those functions temporarily, the icon () will be shown. If Disabling both functions temporarily, the icon () will be shown.

- **Preference Setup**

Others

-Show Connection Information

Un-checking this setting means the launch page will not be shown when you start up the device.

**This option is only available in Mac OS Computers*

-Resident This Application


When you choose this setting the Wormhole Switch program automatically sets up every time you plug in the Wormhole device.

-Enable Access for System Hotkey

Choose this setting to activate the Hotkey function.

**This option is only available in Mac OS Computers*

-Double Click the System Tray Icon to Turn Sharing On/Off Temporarily

Enable/disable the clipboard sharing and Keyboard and Mouse control functions by simply double clicking the icon () on the bottom right hand side of the taskbar

**This function is only available in Windows OS Computers*

-Send Ctrl-Alt-Del to another computer:

This option allows for alternative key options for the [**Ctrl-Alt-Del**] command for the second computer.

**This function is only available when 2 Windows OS Computers are connected.*

o **Check New Update/ Online Update**

Check and update the latest version of software for Wormhole.

1. Please make sure your network is available and **Do Not** unplug the Wormhole during the driver update.

2. Remove the Wormhole cable from the slave computer.

3. Select "**Check New Update**" or "**Online Update**"

4. After you have finished the installation process, re-plug the Wormhole device into both computers.

o **Quit USB Switch / Exit:**

The Wormhole device can be uninstalled in the **Confirmation** box.

TECHNICAL SUPPORT

If you have any issues using this product, please follow the instructions below before returning this product to the store.

1. The User Manual

Contains detailed instructions and a troubleshooting section; many common issues can be easily resolved by reading the user manual.

2. Online Support

Please visit the j5 create website (www.j5create.com) to find the latest software for your device. If you still experience the same issue, you can submit a trouble description via email service@j5create.com . Our j5 create technical support team will reply to you within the next 24 business hours.

3. Telephone Support

Please call us at +1-888-689-4088 and one of our support technicians will be very happy to assist you.

Customer Service:

Toll free number: +1-888-988-0488

Technical Support:

Toll free number: +1-888-689-4088

Email: service@j5create.com

Please contact **Technical Support** during business hours. 10:00AM-6:00PM E.S.T Monday- Friday for further assistance.

WARRANTY OF j5 create

j5 create offers a limited 2-year warranty. User's wear & tear damage are not included.

The user shall call or email **j5 create** customer service with defect information of the product and obtain a return authorization number.

Users are responsible for one way return freight cost and we will take care of one way freight back.

In order to obtain a return authorization, user should have the following information handy when calling or emailing the service team:

- (i) a copy of original purchase invoice to verify your warranty
- (ii) a product serial number
- (iii) a description of the problem
- (iv) a return Material authorization number
- (v) customer's Name, address, and telephone number

j5 create does not warrant that the operation of the product will be uninterrupted or error-free. **j5 create** is not responsible for damage arising from failure to follow instructions relating to the product's use. This warranty does not apply to:(a) consumable parts, unless damage has occurred due to a defect in materials or workmanship; (b) cosmetic damage, including but not limited to scratches, dents ,and broken plastic on ports; (c) damage caused by use with non-**j5 create** products; (d) damage caused by natural disasters (flood, fire, earthquake, lighting strike, typhoon etc..)(e) damage caused by human misuse(lost, accident, abuse, misuse or other external causes) (f) damage caused by operating the product outside the permitted or intended uses described by **j5 create** ; (g) damage caused by service (including upgrades and expansions) performed by anyone who is not a representative of **j5 create** or a **j5 create** Authorized Service Provider; (h) a product or part that has been modified to alter functionality or capability without the written permission of **j5 create**; or (i) if any **j5 create** serial number on the product has been removed or defaced.

If such a situation occurs, **j5 create** will calculate the cost of materials and repair for your reference. This warranty is given by **j5 create** in lieu of any other warranties expressed or implied.

REGULATORY COMPLIANCE

FCC:This equipment has been tested and is found to comply with FCC Part 15 Subpart B § 15.109/15.107 Class B.

Operation is subject to the following two conditions:

- This device may not cause harmful interference
- This device must accept any interference, including interference that may cause undesired operation of the device.

CE:This equipment is in compliance with the requirements of the following regulations:

EN 55022 Class B (2006),

EN 55024 (1998+A1:2001+ A2:2003), (IEC/EN 61000-4-2 (1995+A1:1998+A2:2001)/-3(2006)

C-Tick:This equipment is in compliance with the requirements of the following regulations:

EN 55022 (2006) Class B, AS/NZS CISPR22 © IEC: 2005.

VCCI:This equipment is in compliance with the requirements of the following regulations:

CISPR22 © IEC: 2005

Disclaimer

Information in this document is subject to change without notice. The manufacturer does not make any representations or warranties (implied or otherwise) regarding the accuracy and completeness of this document and shall in no event be liable for any loss of profit or any commercial damage, including but not limited to special, incidental, consequential, or other damage. No part of this document may be reproduced or transmitted in any form by any means, electronic or mechanical, including photocopying, recording or information recording and retrieval systems without the expressed written permission of the manufacturer.

Copyright© 2011 **j5 create**. All rights reserved. All trade names are registered trademarks of their respective owners. Features and specifications are subject to change without notice. Product may not be exactly as shown in the diagrams.