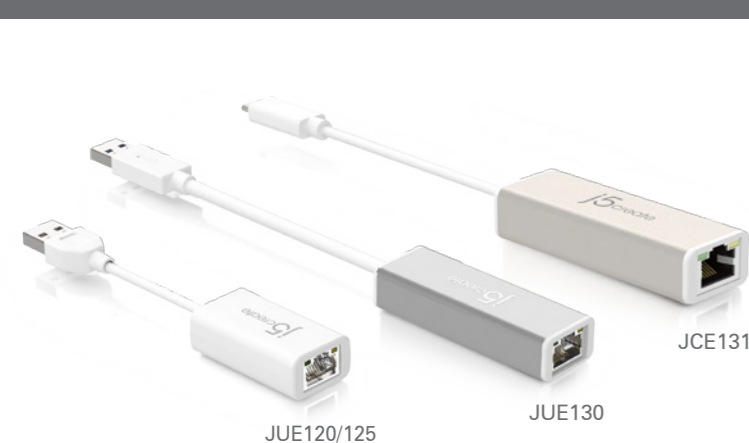




Do **NOT** plug the j5create USB Ethernet adapter into the computer until the driver is completely installed.

USB 3.0 Gigabit Ethernet Adapter JUE130/125/120

USB Type-C Gigabit Ethernet Adapter JCE131



EN : Quick Installation Guide

ES : Guía De Instalación Rápida

DE : Kurzanleitung Für Installation

FR : Guide D'installation Rapide

IT : Guida rapida all'installazione

NL : Beknopte installatiehandleiding

PT : Guia de instalação rápida

SV : Snabbinstallationsguide

日本語 : クイックインストールガイド

繁体中文 : 快速安裝手冊

## Limited Warranty

j5create offers a limited 2-year warranty. User's wear & tear damage is not included. The user shall call or e-mail j5create's customer service with information regarding the defect(s) of the product and obtain a return authorization number. Users are responsible for one-way return freight cost and we will take care of one-way freight back. In order to obtain a return authorization number, users should have the following information handy when calling or emailing the service team:

- a copy of the original purchase invoice to verify your warranty
- a product serial number
- a description of the problem
- customer's name, address, and telephone number

j5create does not warrant that the operation of the product will be uninterrupted or error-free. j5create is not responsible for damage arising from failure to follow instructions relating to the product's use. This warranty does not apply to: (a) consumable parts, unless damage has occurred due to a defect in materials or workmanship; (b) cosmetic damage, including but not limited to scratches, dents, and broken plastic on ports; (c) damage caused by use with non-j5create products; (d) damage caused by natural disasters (flood, fire, earthquake, lightning strike, typhoon etc.); (e) damage caused by human misuse (lost, accident, abuse, misuse or other external causes); (f) damage caused by operating the product outside the permitted or intended uses described by j5create; (g) damage caused by service (including upgrades and expansions) performed by anyone who is not a representative of j5create or a j5create Authorized Service Provider; (h) a product or part that has been modified to alter functionality or capability without the written permission of j5create; or (i) if any j5create serial number on the product has been removed or defaced. If such a situation occurs, j5create will calculate the cost of materials and repair for your reference. This warranty is given by j5create in lieu of any other warranties expressed or implied.

Copyright© 2017 j5create. All rights reserved. All trade names are registered trademarks of their respective owners. Features and specifications are subject to change without notice. Product may not be exactly as shown in the diagrams.

## English

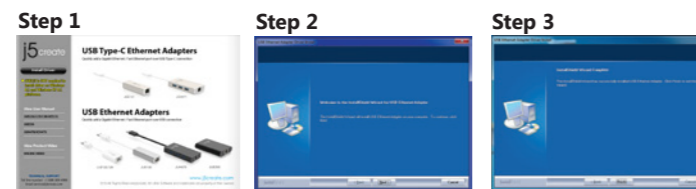


Do **NOT** plug the j5create USB Ethernet Adapter into the computer until the driver is completely installed.

- Thank you for purchasing the j5create USB Ethernet Adapter! This adapter acts as an external Ethernet card for your MAC or PC. It allows you to add an additional Gigabit Ethernet .

### Windows - Driver Installation

Driver not required for Windows 10 / 8.1



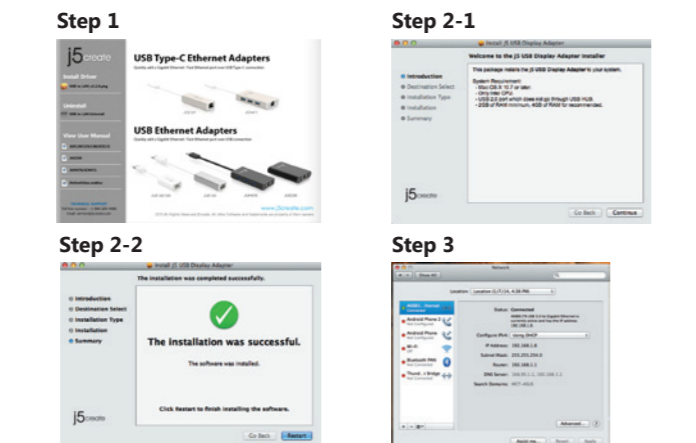
**Step 1**  
If you have internet access the driver will automatically install on Windows 8 / 7 / XP. It is highly recommended that you download the latest driver from www.j5create.com under Support & Services – scroll down to the product's driver you are installing and download the latest driver for your operating system.

If you do not have internet access insert the Driver CD into your computer's CD-ROM drive. The setup program should launch automatically; if not, go to My Computer and click on your optical drive and manually run the setup CD by double-clicking on Setup.exe (the prompt may take a minute to appear).

**Step 2**  
Follow the prompts to install the driver (You may have to click on My Computer > downloads and choose j5UsbCEthernetAdapter to begin installation). Once the driver has been installed choose Yes and click Finish to restart your computer and complete the driver installation.

**Step 3**  
First connect the LAN cable to the RJ-45 connector on the j5create USB Type-C Ethernet Adapter and then to the host computer. Software processing will take a few minutes. After the software processing is complete, you will be ready to use the j5create USB Type-C Ethernet Adapter!

### Mac - Driver Installation



**Step 1**  
If you have internet access it is highly recommended that you download the latest driver from www.j5create.com under Support & Services – scroll down to the product's driver you are installing and download the latest driver for your operating system (Note: If you have trouble downloading this driver your security settings may need to be adjusted to allow for downloading from anywhere).

If you do not have internet access insert the Driver CD into your computer's CD-ROM drive. Click on Finder under Devices and choose j5create. Choose the mac\_install folder and open the dmg file.

**Step 2**  
Choose the correct operating system for your computer and follow the prompts to install the driver (You may have to click on Finder>downloads and choose j5UsbCEthernetAdapter to begin installation). Once initial installation has completed, click Restart to finish installing the software.

**Step 3**  
First connect the LAN cable to the RJ-45 connector on the j5create USB Type-C Ethernet Adapter and then to the host computer. Go to ( ) and then System Preferences and choose the Network tab to adjust. Select "AX88179 USB3.0 to Gigabit Ethernet." Now you are ready to use the j5create USB Type-C Ethernet Adapter!

## Español



NO conecte el adaptador Ethernet USB j5create en la computadora hasta que el conductor está completamente instalado.

- Gracias por comprar el j5create USB Multi-Adapter! Este adaptador funciona como una tarjeta gráfica externa para su MAC o PC. Permite que usted agregue una Ethernet Gigabit.

### Windows - Instalación de controladores

El conductor no se requiere para Windows 10 / 8.1



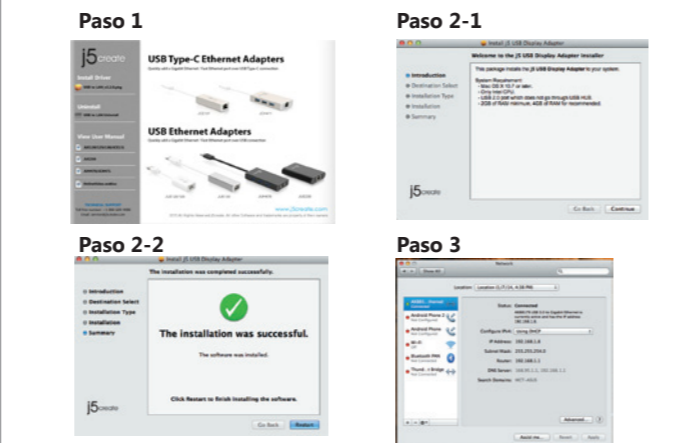
**Paso 1**  
Si tiene acceso a Internet, el controlador se instalará automáticamente en Windows 8/7 / XP. Es recomendable que descargue el último controlador de www.j5create.com en Soporte y Servicios; desplácese hacia abajo hasta el controlador del producto que está instalando y descargue el último controlador para su sistema operativo.

Si no tiene acceso a Internet, inserte el CD del controlador en el CD-ROM de su computadora manejar. El programa de instalación debería iniciarse automáticamente si no, vaya a mi computadora y haga clic en su unidad óptica y ejecute manualmente el CD de instalación haciendo doble clic en Setup.exe (el mensaje puede demorar un minuto en aparecer).minuto en aparecer).

**Paso 2**  
Siga las instrucciones para instalar el controlador. (Es posible que tenga que hacer clic en Mi PC>Descargas y seleccione j5UsbCEthernetAdapter para comenzar la instalación)Una vez que el controlador se ha instalado seleccione Si y haga clic en "Finalizar" para reiniciar el ordenador y completar la instalación del controlador.

**Paso 3**  
Primero conecte el cable LAN al conector RJ-45 en el adaptador Ethernet USB j5create Tipo-C y luego a la computadora host. Procesamiento Software tomará unos minutos. Tras el procesamiento del software, usted estará listo para utilizar el adaptador Ethernet USB j5create Tipo-C!

### Mac - Instalación del controlador



**Paso 1.**  
Si tiene acceso a Internet, le recomendamos que descargue la última controlador desde www.j5create.com en Soporte y Servicios - desplácese hasta el el controlador del producto que está instalando y descargue el último controlador para su sistema de operación (Nota: si tiene problemas para descargar este controlador, su configuración de seguridad se puede ajustarse para permitir la descarga desde cualquier lugar).

Si no tiene acceso a Internet, inserte el CD del controlador en el CD-ROM de su computadora. Haga clic en Finder en Dispositivos y seleccione j5create. Elija el mac\_install carpeta y abra el archivo dmg.

**Paso 2**  
Elija el sistema operativo correcto para su sistema y siga el instrucciones para instalar el controlador. (Es posible que tenga que hacer clic en Mi PC > Descargas y seleccione j5UsbCEthernetAdapter para comenzar la instalación.) Una vez que la instalación inicial se haya completado, haga clic en Reiniciar para finalizar la instalación del software.

**Paso 3**  
Primero conecte el cable de LAN al conector RJ-45 en el j5create USB Type-C adaptador Ethernet y luego a la computadora. Ir a ( ) y luego Sistema Preferencias y elige la pestaña Red para ajustar. Seleccione "AX88179 USB3.0 para Gigabit Ethernet. Ahora está listo para usar el j5create USB Type-C Ethernet Adaptador!Adapter!

## Française



Ne branchez pas le j5create USB Adapteur Ethernet dans l'ordinateur jusqu'à ce que le conducteur est complètement installé.

- Merci d'avoir acheté l'Adapteur d'affichage j5create! Cet adapteur agit comme une carte graphique externe pour votre MAC ou PC. Il vous permet d'ajouter un port Ethernet Gigabit.

### Windows - Installation

Pilote pas nécessaire pour Windows 10 / 8.1



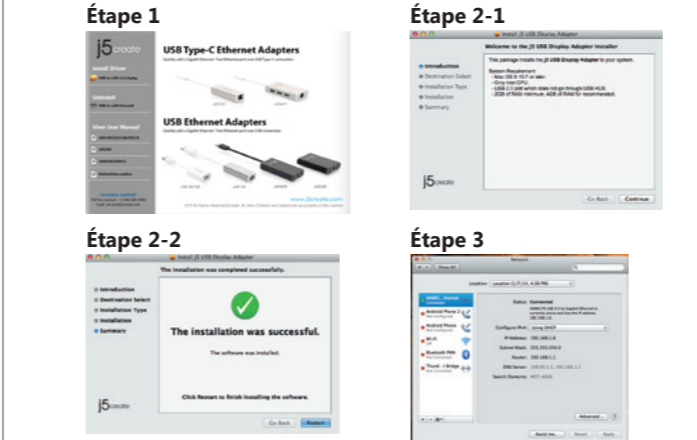
**Étape 1.**  
Si vous avez accès à Internet le pilote sera automatiquement installé sur Windows 8 / 7 / XP. Télécharger Pilote est disponible à sur www.j5create.com dans la rubrique «soutien /téléchargement» domaine

Pour commencer, insérez le CD de pilotes dans le lecteur de CD-ROM de votre ordinateur. Le programme d'installation devrait se lancer automatiquement. Si l'exécution automatique ne démarre pas, allez à «Poste de travail», cliquez sur votre lecteur optique, et lancez manuellement le CD d'installation en double-cliquant sur «Setup.exe»

**Étape 2**  
Suivez les instructions pour installer le pilote. (Vous pouvez avoir à cliquer sur Poste de travail> téléchargements et choisissez j5UsbCEthernetAdapter pour commencer l'installation.) Lorsque l'assistant d'installation est terminé. Cliquez sur Terminer pour Redémarrer.

**Étape 3**  
Connectez le LAN externe à la USB Type-C Ethernet Adapter. Connectez USB 3.0 Multi-Adapter dans un port USB disponible d'un PC ou d'un ordinateur portable. Après une attente de quelques minutes, le logiciel est prêt à utiliser USB Type-C Ethernet Adapter.

### Mac - Installation



**Étape 1**  
Télécharger Pilote est disponible à sur www.j5create.com dans la rubrique «soutien /téléchargements» domaine (Remarque: Si vous avez des difficultés à télécharger ce pilote vos paramètres de sécurité peuvent avoir besoin d'être ajustée pour permettre le téléchargement de n'importe où).

Pour commencer, insérez le CD de pilotes dans le lecteur de CD-ROM de votre ordinateur. Cliquez sur Chercheur sous Périphériques choisir j5create. Cliquez on «mac\_install» folder and open «dmg» file.

**Étape 2**  
Choisissez le système d'exploitation correspondant à votre système et suivez les instructions pour installer le pilote. (Vous pouvez avoir à cliquer sur Poste de travail> Downloads Taste and wählen Sie j5UsbCEthernetAdapter pour commencer l'installation.) Lorsque l'assistant d'installation est terminé. Cliquez sur Redémarrer pour Terminer.

**Étape 3**  
Connectez le LAN externe à la USB 3.0 Multi-Adapter. Connectez USB Type-C Ethernet Adapter dans un port USB disponible d'un PC ou d'un ordinateur portable. Aller à la ( ) puis "Préférences Système". Choisissez "Réseau" onglet pour ajuster sélectionner "AX88179 USB 3.0 to Gigabit Ethernet". Le logiciel est prêt à utiliser USB Type-C Ethernet Adapter.

## Deutsch



Schließen Sie den j5create USB Ethernet Adapter nicht an bis der Treiber vollständig installiert ist.

- Danke, dass Sie sich für den j5create USB Adapter entschieden haben! Dieser Adapter fungiert als externe Grafikkarte für Ihren Mac oder PC. Es ermöglicht Ihnen, eine zusätzliche Gigabit Ethernet anzuschließen.

### Windows - Installation Für Gerätetreiber

Treiber für Windows 10 / 8.1 erforderlich



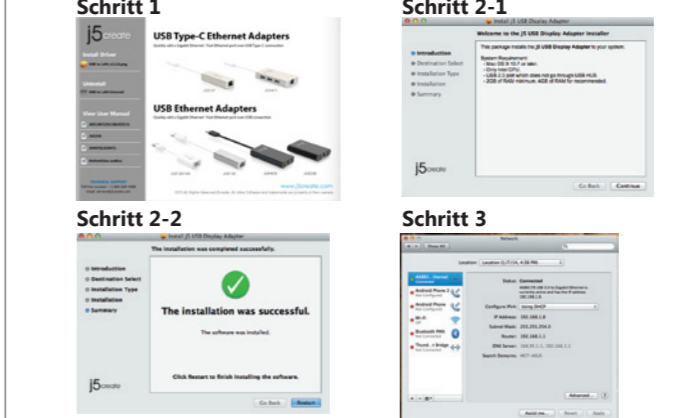
**Schritt 1**  
Wenn Sie Zugang zum Internet haben wird der Treiber automatisch auf Windows 8 / 7 / XP installieren. Treiber Update gibt es auf www.j5create.com unter „support & Service“.

Legen Sie zunächst die Treiber-CD in das CD-ROM-Laufwerk des Computers ein. Das Setup-Programm wird jetzt automatisch gestartet. Wenn die Anwendung nicht automatisch gestartet wird, gehen Sie zu "Computer", klicken Sie auf das Symbol für das optische Laufwerk, in dem sich die CD befindet, und starten Sie das Setup-Programm manuell, indem Sie doppelt auf "Setup.exe" klicken.

**Schritt 2**  
Folgen Sie den Anweisungen, um die Treiber zu installieren. (Eventuell müssen Sie auf Arbeitsplatz> Downloads Taste und wählen Sie j5UsbCEthernetAdapter um um die Installation zu beginnen.)Wenn der InstallShield-Assistent abgeschlossen ist, klicken Sie auf Fertig stellen, um den Computer neu zu starten.

**Schritt 3**  
Wenn der Computer neu gestartet wurde, schließen Sie den j5create USB Type-C Ethernet Adapter an den LAN Gigabit. Warten Sie ein paar Minuten für die Software Verarbeitung, dann können Sie den USB Type-C Ethernet Adapter nutzen.

### Mac - Installation Für Gerätetreiber



**Schritt 1**  
Treiber update gibt es auf www.j5create.com unter „support & Service“. (Hinweis: Wenn Sie Schwierigkeiten haben, bei dem Herunterladen des Treibers müssen wir möglicherweise Ihre Sicherheitseinstellung auf "Download von überall" anpassen

Wenn Sie keinen Internetzugang haben legen Sie die Treiber-CD in das CD-ROM-Laufwerk des Computers. Klicken Sie auf Finder unter Geräte wählen j5create. Klicken Sie auf "mac\_install"-Ordner und öffnen Sie die dmg-Datei.

**Schritt 2**  
Wählen Sie das richtige Betriebssystem für Ihr System und befolgen Sie die Anweisungen, um die Treiber zu installieren. (Eventuell müssen Sie auf Arbeitsplatz> Downloads Taste und wählen Sie j5UsbCEthernetAdapter um die Installation zu beginnen.)Sobald die Installation abgeschlossen ist, klicken Sie auf "Neustart", um die Installation der Software zu beenden.

**Schritt 3**  
Wenn der Computer neu gestartet wurde, schließen Sie den j5create USB Type-C Ethernet Adapter an den LAN Gigabit. Gehen Sie auf ( ) und dann auf „Systempräferenzen“. Wählen Sie „Netzwerk“ aus "AX88179 USB 3.0 to Gigabit Ethernet". Dann können Sie den USB Type-C Ethernet Adapter nutzen.

## Italian



NON inserire la scheda Ethernet USB j5create nel computer fino all'installazione completa del driver.

- Grazie per aver acquistato la scheda Ethernet USB j5create! Questa scheda funge da scheda video Ethernet per MAC o PC. Consente di aggiungere un ulteriore Gigabit Ethernet.

### Windows - Installazione del driver

Driver non necessario per Windows 10 / 8.1



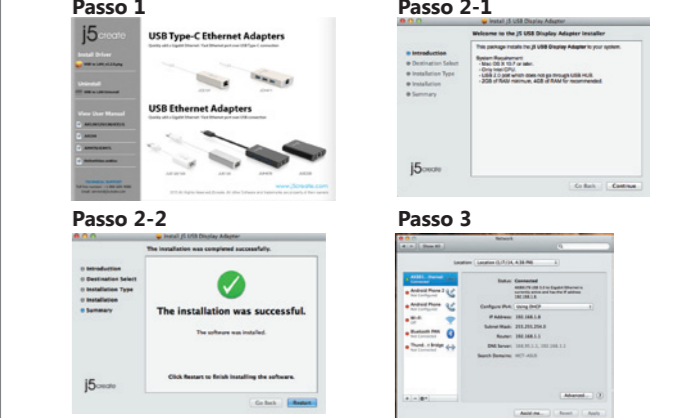
**Passo 1**  
Se si dispone di accesso Internet, il driver viene installato automaticamente su Windows 8 / 7 / XP. Si consiglia vivamente di scaricare il driver più recente dal sito www.j5create.com in Supporto e servizi – scorrere verso il basso sul driver del prodotto che si sta installando e scaricare il driver più recente per il sistema operativo.

Se non si dispone di accesso Internet, inserire il CD del driver nell'unità CD-ROM del computer il programma di installazione si avvia automaticamente. In caso contrario, andare su Computer e fare clic sull'unità ottica, quindi eseguire manualmente il CD di installazione facendo doppio clic su Setup.exe (le istruzioni potrebbero apparire dopo un minuto).

**Passo 2**  
Seguire le istruzioni per installare il driver. (Potrebbe essere necessario fare clic su Computer > Download e selezionare j5UsbCEthernetAdapter per avviare l'installazione). Una volta installato il driver, selezionare Si e fare clic su Fine per riavviare il computer e completare l'installazione del driver.

**Passo 3**  
Prima collegare il cavo LAN al connettore RJ-45 sulla scheda Ethernet USB tipo C j5create, quindi al computer host. L'elaborazione software richiede qualche minuto. Al termine dell'elaborazione software, si è pronti per utilizzare la scheda Ethernet USB tipo C j5create!

### Mac- Installazione del driver



**Passo 1**  
Se si dispone di accesso Internet, si consiglia vivamente di scaricare il driver più recente dal sito www.j5create.com in Supporto e servizi – scorrere verso il basso sul driver del prodotto che si sta installando e scaricare il driver più recente per il sistema operativo (Nota: In caso di problemi di download del driver, è necessario regolare le impostazioni di protezione per consentire il download da ovunque).

Se non si dispone di accesso Internet, inserire il CD del driver nell'unità CD-ROM del computer. Fare clic su Finder in Dispositivi e selezionare j5create. Selezionare la cartella mac\_install e aprire il file dmg.

**Passo 2**  
Scegliere il sistema operativo corretto per il proprio sistema e seguire le istruzioni per installare il driver. (Potrebbe essere necessario fare clic su Finder > Download e selezionare j5UsbCEthernetAdapter per avviare l'installazione). Una volta completata l'installazione, fare clic su Riavvia per terminare l'installazione del software.

**Passo 3**  
Prima collegare il cavo LAN al connettore RJ-45 sulla scheda Ethernet USB tipo C j5create, quindi al computer host. Andare su ( ) , quindi Preferenze di Sistema e selezionare la scheda Rete da regolare. Selezionare "AX88179 USB3.0 to Gigabit Ethernet". Quindi, si è pronti per utilizzare la scheda Ethernet USB tipo C j5create!

