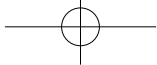


j5create

WORMHOLE KM SWITCH

QUICK INSTALL GUIDE

JUC100

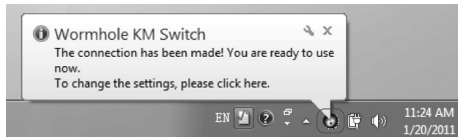
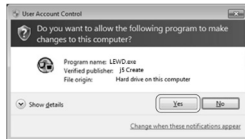


j5create

GETTING STARTED



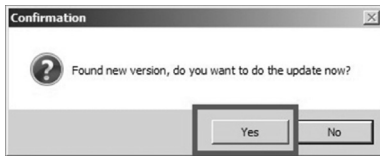
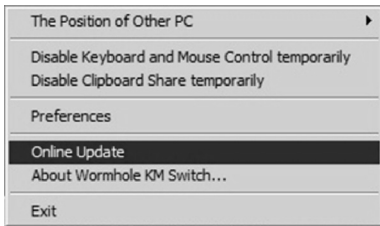
- Step 1. Connect one end of the **j5 Wormhole KM Switch** to a USB port on one of two computers.
- Step 2. Connect the other end of the **j5 Wormhole KM Switch** to a USB port on the second computer.
- Step 3. The device will automatically start software installation on both computers.
- Step 4. Window might be popped out "AutoPlay" option. Please Click on the option "Run WKMLoader.exe" to complete installation.



Update the software version of your Wormhole:

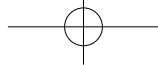
Note:

1. Please make sure **the network is available** during the driver update.
2. Remove the cable from the slave computer (keep the cable plugged into the primary computer).
3. Start the online update : Right-click the Wormhole Icon on the bottom right-hand corner of the screen).
4. Select "**Online update**", and Select "**Yes**" to proceed.



5. Follow the direction to finish installation.





j5_{create}

EXPLORE THE OUTSTANDING FEATURES

Keyboard and Mouse Sharing

Move mouse cursor between two displays intuitively and seamlessly.



Switch the Keyboard usage to another computer .

***Keyboard control always follows the cursor**



Clipboard Sharing

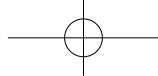
With the clipboard sharing feature, you can easily edit, copy or paste clipboard content bi-directionally.



File Transferring

It is an easiest and fast way to transfer files between 2 computers. Just simply drag and drop the file or folder to the other.





Required Environment

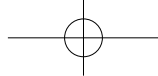
- Microsoft Windows 7, Vista, XP, 2000 SP3 (32-bit or 64-bit) Compatible
- CPU: Intel Pentium II Processor or later
- RAM: 512MB RAM or higher
- Hard disk space requirement of at least 100MB
- Available USB port 1.1 or 2.0 port

Package Contents

- Wormhole KM Switch Adapter (1.8 meter)
- Quick Install Guide
- User Manual

Regulatory Compliance

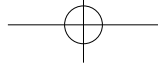
- FCC / CE / C-Tick / VCCI



Disclaimer

Information in this document is subject to change without notice. The manufacturer does not make any representations or warranties (implied or otherwise) regarding the accuracy and completeness of this document and shall in no event be liable for any loss of profit or any commercial damage, including but not limited to special, incidental, consequential, or other damage. No part of this document may be reproduced or transmitted in any form by any means, electronic or mechanical, including photocopying, recording or information recording and retrieval systems without the express written permission of the manufacturer.

Copyright© 2011 KaiJet Technology International Limited, Inc. All rights reserved. All trade names are registered trademarks of their respective owners. Features and specifications are subject to change without notice. Product may not be exactly as shown in the diagrams.



STOP !!

If you have any issue using this product,
please try the following instructions below
before returning this product to the store.

1. The User Manual

Contains detailed instructions and a troubleshooting section, many common issues can be easily resolved by reading the user manual.

2. Online Support

Please visit the j5 create website (www.j5create.com) to find the latest software for your device. If you still experience issues, you can submit a trouble ticket through j5 web support. Your ticket will be handled within 24 hours. We stand behind our products and it is our goal to provide you world class support.

3. Telephone Support

Please call us @ 888-689-4088 and one of our support technicians will be very happy to assist you.

TECHNICAL SUPPORT

Toll free number: 888-689-4088

Business Hours: Mon. – Fri. 10:00 a.m – 6:00 p.m E.S.T

Email: service@j5create.com